



Manor House Marylebone Road

, London, NW1 5NP

Guide price £550,000

Nestled in the heart of Marylebone Road, this charming purpose-built flat offers a delightful blend of classic elegance and modern convenience. Spanning an impressive 624 square feet, the property features a well-appointed reception room that serves as a perfect space for relaxation or entertaining guests. The flat comprises one spacious bedroom, providing a tranquil retreat, and a contemporary bathroom designed for comfort and functionality.

Constructed in 1900, this residence boasts a rich history while incorporating the essential amenities for contemporary living. The location is ideal, with easy access to a variety of local shops, cafes, and restaurants, as well as excellent transport links that connect you to the rest of London.

This flat is perfect for individuals or couples seeking a stylish urban home in one of London's most desirable areas. With its blend of character and practicality, this property is not to be missed.

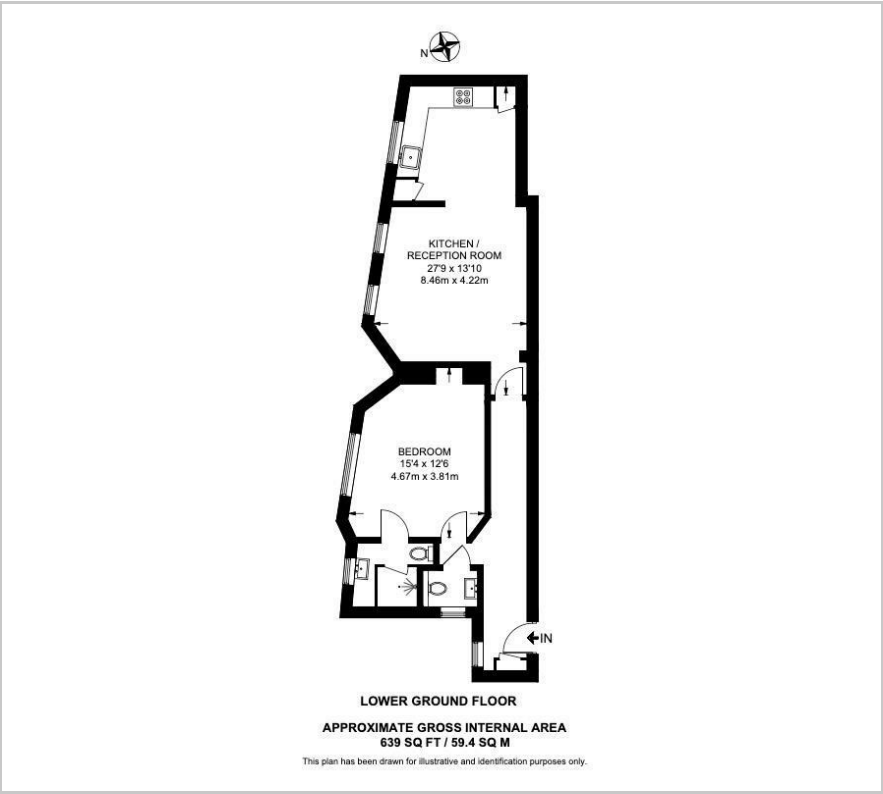
- Fantastic Location
- Excellent condition throughout
- Fully fitted kitchen
- Large double bedroom
- Ensuite Bathroom
- Guest WC

Viewing

Please contact us on 020 3198 4517 if you wish to arrange a viewing appointment for this property or require further information.



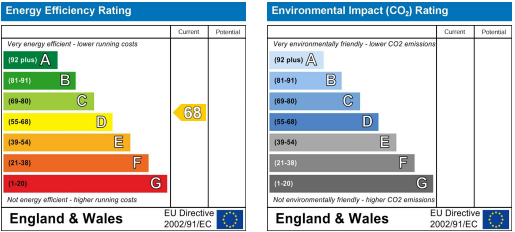
Floor Plan



Area Map



Energy Efficiency Graph



These particulars, whilst believed to be accurate are set out as a general outline only for guidance and do not constitute any part of an offer or contract. Intending purchasers should not rely on them as statements of representation of fact, but must satisfy themselves by inspection or otherwise as to their accuracy. No person in this firms employment has the authority to make or give any representation or warranty in respect of the property.